

ARDEN P.U.D. POD D SOUTHEAST

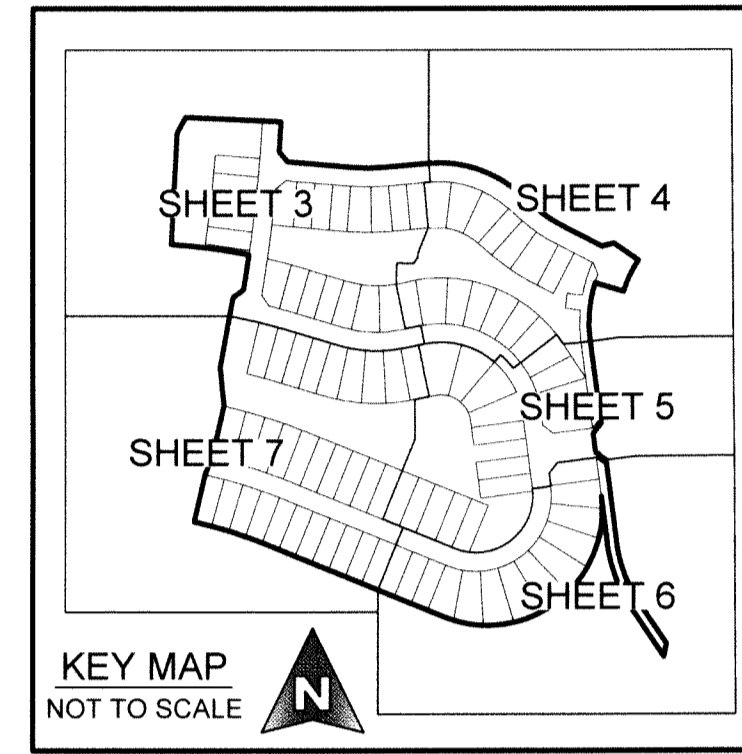
BEING A REPLAT OF A PORTION OF TRACT "FD", ARDEN P.U.D. PLAT 1, AS RECORDED IN PLAT BOOK 122, PAGES 32 THROUGH 51, PUBLIC RECORDS OF PALM BEACH COUNTY, FLORIDA, AND ALL OF TRACT "O-7" AND TRACT "O-8", ARDEN P.U.D. POD C NORTH, AS RECORDED IN PLAT BOOK 129, PAGES 186 THROUGH 195, INCLUSIVE, PUBLIC RECORDS OF PALM BEACH COUNTY, FLORIDA AND LYING IN SECTION 28, TOWNSHIP 43 SOUTH, RANGE 40 EAST, PALM BEACH COUNTY, FLORIDA.

COORDINATE NOTES:
 STATE PLANE COORDINATES SHOWN ARE GRID
 DATUM = NAD 83, 1990 ADJUSTMENT
 ZONE = FLORIDA EAST
 LINEAR UNITS = US SURVEY FOOT
 COORDINATE SYSTEM 1983 STATE PLANE TRANSVERSE MERCATOR PROJECTION
 ALL DISTANCES ARE GROUND
 PROJECT SCALE FACTOR = 0.99999219
 GROUND DISTANCE X SCALE FACTOR = GRID DISTANCE
 BEARINGS AS SHOWN HEREON ARE GRID DATUM, NAD 83 1990 ADJUSTMENT,
 FLORIDA EAST ZONE.

PREPARING SURVEYOR & MAPPER'S STATEMENT

THIS INSTRUMENT WAS PREPARED BY LESLIE C. BISPOTT, P.S.M. OF MICHAEL B. SCHORAH AND ASSOCIATES, INC., 1850 FOREST HILL BOULEVARD, SUITE 206, WEST PALM BEACH, FLORIDA, 33406.

123



LEGEND

- P.O.C. = POINT OF COMMENCEMENT
- P.O.B. = POINT OF BEGINNING
- P.C.P. = PERMANENT CONTROL POINT
- P.R.M. = PERMANENT REFERENCE MONUMENT
- O.R.B. = OFFICIAL RECORD BOOK
- P.B. = PLAT BOOK
- P.G.S. = PAGES
- D.B. = DEED BOOK
- P.B.C. = PALM BEACH COUNTY
- R/W = RIGHT OF WAY
- CL = CENTERLINE
- U.E. = UTILITY EASEMENT
- D.E. = DRAINAGE EASEMENT
- R = RADIUS
- L = ARC LENGTH
- Δ = CURVE CENTRAL ANGLE
- ⊙ = FOUND PALM BEACH COUNTY DISK IN CONCRETE
- = SET NAIL AND ALUMINUM DISK, STAMPED P.C.P. LB 2438
- = SET 4"x4"x24" C.M. WITH ALUMINUM DISK, STAMPED PRM LB 2438
- = SET MAG NAIL AND 1 1/4" BRASS WASHER STAMPED PRM LB 2438
- = FOUND 4"x4"x24" C.M. WITH ALUMINUM DISK, STAMPED P.R.M. L.B. 2438 (UNLESS OTHERWISE SHOWN)
- L.M.E. = LAKE MAINTENANCE EASEMENT
- C.L. = CHORD LENGTH
- C.B. = CHORD BEARING
- L.M.A.E. = LAKE MAINTENANCE ACCESS EASEMENT
- R.L. = RADIAL LINE
- N = NORTHING, WHEN USED WITH COORDINATES
- E = EASTING, WHEN USED WITH COORDINATES
- E = LIMITED ACCESS EASEMENT
- L.S.E. = LIFT STATION EASEMENT
- FD = FOUND
- OA = OVERALL
- C.M. = CONCRETE MONUMENT
- F.P.L. = FLORIDA POWER AND LIGHT
- L.E. = LANDSCAPE EASEMENT
- NO = NUMBER
- P.B.C.U.E. = PALM BEACH COUNTY UTILITY EASEMENT
- P.S.M. = PROFESSIONAL SURVEYOR AND MAPPER
- D.O.T. = DEPARTMENT OF TRANSPORTATION
- F.DOT = FLORIDA DEPARTMENT OF TRANSPORTATION
- P.U.D. = PLANNED UNIT DEVELOPMENT
- W.M.E. = WATER MANAGEMENT EASEMENT
- W.M.A.E. = WATER MANAGEMENT ACCESS EASEMENT
- S.E. = SIDEWALK EASEMENT
- NPBCID = NORTHERN PALM BEACH COUNTY IMPROVEMENT DISTRICT
- LB = PROFESSIONAL SURVEYOR AND MAPPER BUSINESS LICENSE NUMBER
- EB = PROFESSIONAL ENGINEER BUSINESS LICENSE NUMBER
- P.C. = POINT OF CURVATURE
- P.T. = POINT OF TANGENCY
- P.R.C. = POINT OF REVERSE CURVATURE
- N.T. = POINT OF NON-TANGENCY
- M.R.O.E. = MAINTENANCE AND ROOF OVERHANG EASEMENT
- SECTION 28-43-40 = SECTION 28, TOWNSHIP 43 SOUTH, RANGE 40 EAST
- = MATCH LINE
- ⊕ = SECTION CORNER

SURVEYOR AND MAPPER'S NOTES:

1. THERE SHALL BE NO BUILDINGS, STRUCTURES, CONSTRUCTION OF ANY KIND, TREES OR SHRUBS PLACED IN, OVER, UNDER OR UPON THE INGRESS/EGRESS EASEMENTS, WATER MANAGEMENT EASEMENTS, WATER MANAGEMENT ACCESS EASEMENTS OR WATER MANAGEMENT MAINTENANCE EASEMENTS, AS SHOWN HEREON, UNLESS AND UNTIL APPROVED, IN PERMIT FORM, BY THE NORTHERN PALM BEACH COUNTY IMPROVEMENT DISTRICT.
2. IN THOSE CASES WHERE EASEMENTS OF DIFFERENT TYPES CROSS OR OTHERWISE COINCIDE, DRAINAGE EASEMENTS, WATER MANAGEMENT EASEMENTS AND WATER MANAGEMENT ACCESS EASEMENT SHALL HAVE FIRST PRIORITY, UTILITY EASEMENTS SHALL HAVE SECOND PRIORITY, ACCESS EASEMENTS SHALL HAVE THIRD PRIORITY, AND ALL OTHER EASEMENTS SHALL SUBORDINATE TO THESE WITH THEIR PRIORITIES BEING DETERMINED BY USE RIGHTS GRANTED.
3. ALL LINES INTERSECTING CIRCULAR CURVES ARE NON-RADIAL UNLESS OTHERWISE NOTED AS RADIAL.
4. NOTICE: THIS PLAT, AS RECORDED IN ITS GRAPHIC FORM, IS THE OFFICIAL DEPICTION OF THE SUBDIVIDED LANDS DESCRIBED HEREIN, AND WILL IN NO CIRCUMSTANCES BE SUPPLANTED IN AUTHORITY BY ANY OTHER GRAPHIC OR DIGITAL FORM OF THE PLAT. THERE MAY BE ADDITIONAL RESTRICTIONS THAT ARE NOT RECORDED ON THIS PLAT THAT MAY BE FOUND IN THE PUBLIC RECORDS OF PALM BEACH COUNTY.
5. BUILDING SETBACK LINES SHALL BE AS REQUIRED BY CURRENT PALM BEACH COUNTY ZONING REGULATIONS.
6. BEARINGS AS SHOWN HEREON ARE BASED ON THE NORTHERLY LINE OF TRACT "FD", ARDEN P.U.D. PLAT 1, AS RECORDED IN PLAT BOOK 122, PAGES 32-51, PUBLIC RECORDS OF PALM BEACH COUNTY, FLORIDA HAVING A GRID BEARING OF SOUTH 88°17'38" EAST, WHICH IS RELATIVE TO THE NORTH AMERICAN DATUM (N.A.D.) 83, 1990 ADJUSTMENT.
7. THE PROPERTY AS DESCRIBED HEREON IS SUBJECT TO A "WATER MANAGEMENT BLANKET EASEMENT" IN FAVOR OF "NORTHERN PALM BEACH COUNTY IMPROVEMENT DISTRICT" AS RECORDED IN OFFICIAL RECORDS BOOK 27746, PAGE 699 OF THE PUBLIC RECORDS OF PALM BEACH COUNTY, FLORIDA, PURSUANT TO THE PROPERTY INFORMATION REPORT FOR THE FILING OF A SUBDIVISION PLAT IN PALM BEACH COUNTY, FLORIDA BY "FIRST AMERICAN TITLE INSURANCE COMPANY" FILE NUMBER 1062-5152632/SLG/REVISION NO. 1, EFFECTIVE DATED JANUARY 8, 2021.

SITE DATA

PLANNED DEVELOPMENT CONTROL NUMBER 2005-394

NORTHERN PALM BEACH COUNTY IMPROVEMENT DISTRICT ACCEPTANCE

STATE OF FLORIDA
 COUNTY OF PALM BEACH

THE NORTHERN PALM BEACH COUNTY IMPROVEMENT DISTRICT HEREBY ACCEPTS THE WATER MANAGEMENT EASEMENTS AND THE WATER MANAGEMENT ACCESS EASEMENTS, AS SHOWN HEREON AND HEREBY ACKNOWLEDGES THAT NORTHERN PALM BEACH COUNTY IMPROVEMENT DISTRICT HAS NO MAINTENANCE OBLIGATION, IN, OVER, UNDER OR UPON THE LANDS OVER WHICH SAID EASEMENTS LIE, AND HEREBY ACCEPTS THE RIGHT, BUT NOT THE OBLIGATION TO CONSTRUCT, OPERATE, REPAIR, REPLACE, UPGRADE, INSPECT AND MAINTAIN ITS FACILITIES LYING WITHIN SAID WATER MANAGEMENT EASEMENTS.

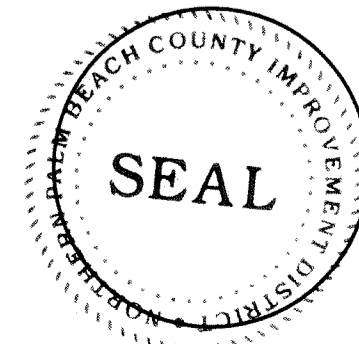
IN WITNESS WHEREOF, NORTHERN PALM BEACH COUNTY IMPROVEMENT DISTRICT HAS CAUSED THESE PRESENTS TO BE SIGNED BY MATTHEW J. BOYKIN, ITS PRESIDENT, BOARD OF SUPERVISORS, AND ATTESTED BY SUSAN P. SCHEFF, ITS ASSISTANT SECRETARY, BOARD OF SUPERVISORS, THIS 23RD DAY OF February, 2022.

NORTHERN PALM BEACH COUNTY IMPROVEMENT DISTRICT
 UNIT OF DEVELOPMENT 63

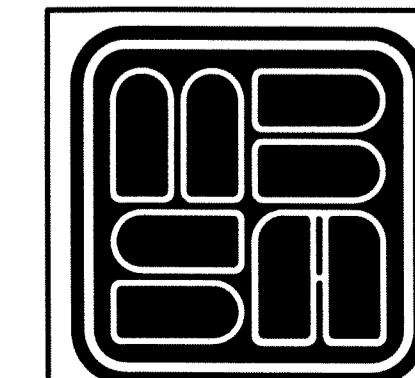
ATTEST: *Susan P. Scheff*
 SUSAN P. SCHEFF, ASSISTANT SECRETARY
 BOARD OF SUPERVISORS

BY: *Matthew J. Boykin*
 MATTHEW J. BOYKIN, PRESIDENT
 BOARD OF SUPERVISORS

NORTHERN PALM BEACH COUNTY
 IMPROVEMENT DISTRICT



AREA TABULATION		FOR THE USE OF NORTHERN PALM BEACH COUNTY IMPROVEMENT DISTRICT		
TRACT DESIGNATION	ACREAGE	LAND USE CLASSIFICATION	CODE	DESIGNATED ACREAGE
TRACT "O-1"	1.082 ACRES	EXEMPT ACREAGE	EXZ	1.082 ACRES
TRACT "O-2"	2.395 ACRES	EXEMPT ACREAGE	EXZ	2.395 ACRES
TRACT "O-3"	3.172 ACRES	EXEMPT ACREAGE	EXZ	3.172 ACRES
TRACT "O-4"	0.311 ACRES	EXEMPT ACREAGE	EXZ	0.311 ACRES
TRACT "O-5"	0.240 ACRES	EXEMPT ACREAGE	EXZ	0.240 ACRES
TRACT "RW-1"	0.193 ACRES	EXEMPT ACREAGE	EXZ	0.193 ACRES
TRACT "RW-2"	4.471 ACRES	EXEMPT ACREAGE	EXZ	4.471 ACRES
LOTS 1 - 93	15.305 ACRES	SINGLE FAMILY-ZERO LOT LINE	ZLL	15.305 ACRES
TOTAL	27.169 ACRES			



MICHAEL B. SCHORAH & ASSOCIATES, INC.
 1850 FOREST HILL BLVD., SUITE 206
 WEST PALM BEACH, FLORIDA 33406
 EB# 2438 TEL. (561) 968-0080 FAX. (561) 642-9726 LB# 2438

ARDEN P.U.D. POD D SOUTHEAST